



Fibre Optic Splice Closure



DATA SHEET

☎ +44 20 8895 6455
✉ info@webbinfra.com
🌐 www.webbinfra.com



Fibre Optic Splice Closure C.05.JC-D.306.32SC

Joint closures are a range of products primarily used for joining cables. Joints in cables are a practical reality with the increase in distances that data needs to be transmitted. The primary function of a fiber optic joint closure is to protect the fiber joints from any physical damage.

Webb joint closures are made of high corrosion resistant polycarbonate material with heavy duty IP 68 delivering synthetic gaskets for total ingress protection. Our production treatments make our units UV resistant and waterproof. Every cable entry has high quality cable sealing plugs to maintain IP 68 ratings.

Features

- Suitable for 48 SC single structure adaptors
- Maximum for 32 drop cables
- Can hold 1 x 2, 1 x 4, 1 x 8, 1 x 16, 1 x 32 categories of PLC splitter
- Can be utilized for notched, closed & rigid sheath platforms
- Suitable for the entire range of fibre optic cables
- Inclusive of sheath conservation and central strength member fasten feature
- Corrugated closure and light-weight plastic delivers robustness and resistance to chemical and UV degradation.
- Requires only base level usage of tools during installation & re-entry
- Inclusive of the entire range of hardware & flash test option is available for closures
- Protection for dome-end splice with mechanical seal, recyclable and suitable for re-entry
- RoHS compliance

Applications

- Underground
- Aerial
- Vault
- Wall mounting
- Water tight

**Specifications are subject to change without notice based on technical recommendations and related product enhancements*



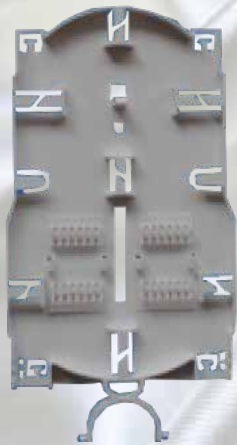
C.05.JC-D.306A.32SC

C.05.JC-D.306B.32SC

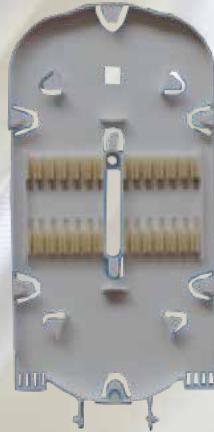
Specifications

Part number	Splice tray	Spliced fibre storage capacity	Size(mm) Height x Diameter	PLC splitter	Cable ports	Max. diameter of cable(mm)
C.05.JC-D.306A.32SC	Tray 204A capacity:24F hold two tray	48F fusion splice	450mm x 230 mm	1 x 32, 1 x 16 PLC, 1 x 8 splitter	1 large port + 4 round ports	1 large round port: for 1 loop cable with max dia 17mm 4 round ports: each port for 1 cable with max dia 17.5mm or 9 pcs of drop cables with diameter 2 x 5mm or 9 pcs of cables with diameter 3mm,2 x 3.1mm or 4 pcs of cables with diameter 7mm
C.05.JC-D.306B.32SC	Tray 204B capacity:24F hold 3tray	72F fusion splice				
	Adaptor capacity: 36 SC simplex adaptors					

**Specifications are subject to change without notice based on technical recommendations and related product enhancements*



Tray 204A



Tray 204B



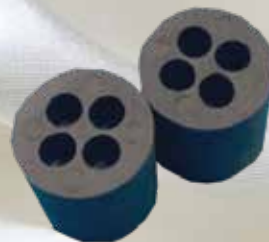
Tray with PLC splitter



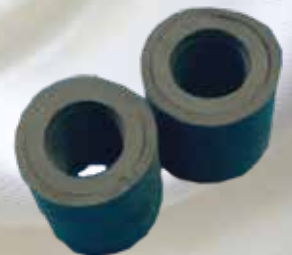
For 9 pcs of drop cables with diameter 2 x 5mm,



For 9 pcs of cables with diameter 3mm, 2 x 3.1mm



For 4 pcs of cables with diameter 7mm



For 1 pc of cable with diameter 17.5mm

**Specifications are subject to change without notice based on technical recommendations and related product enhancements*

Optional Accessories

Type	Code
Earthing wire	C.05.OA.JC-EW
Hoop for pole mount	C.05.OA.JC-H
Transom for pole mount	C.05.OA.JC-T
Bracket option for wall mount	C.05.OA.JC-B
Sand paper	C.05.OA.JC-SP
Anchor bolts	C.05.OA.JC-AB

**Specifications are subject to change without notice based on technical recommendations and related product enhancements*